

Serie Cylinders

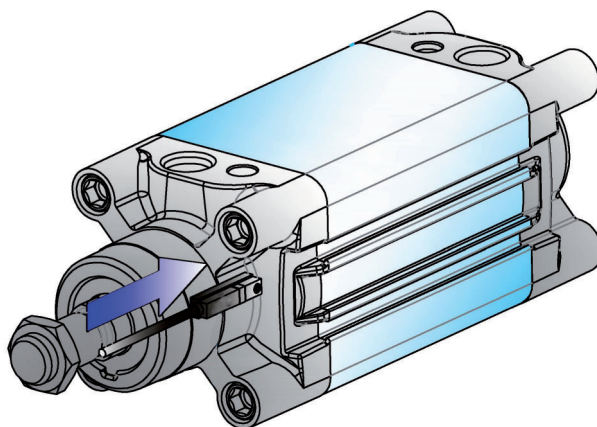
CILINDRI ED ACCESSORI - CYLINDERS AND ACCESSORIES



Sensori Magnetici Serie DSL / Magnetic Switches DSL Serie

Sensori DSL con inserimento longitudinale per i seguenti modelli di cilindri:

DSL sensor lengthwise assembly for the following models of cylinders:



Minicilindri / Mini Cylinders



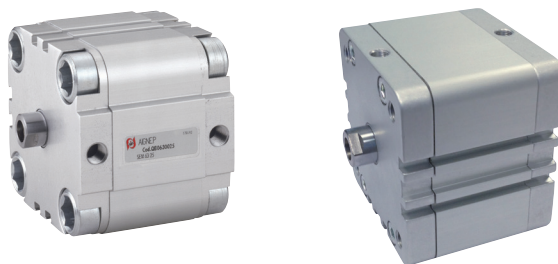
Minicilindri Inox / Mini Cylinders Inox



Cilindri A95 / Cylinders A95



Cilindri Compatti / Compact Cylinders



Cilindri Corsa Breve / Short Stroke








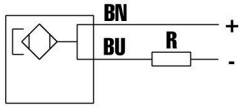
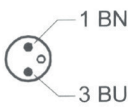
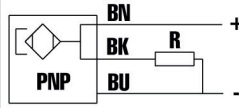
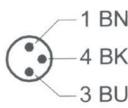
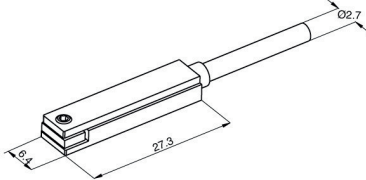
Cilindri Serie X / Cylinders X Series



Cilindri Serie X / Cylinders X Series

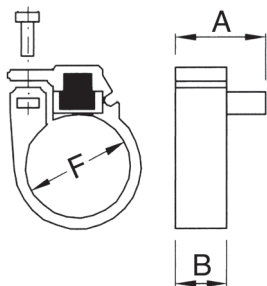


Caratteristiche tecniche / Technical data

DESCRIZIONE DESCRIPTION	VERSIONE REED - REED VERSION		VERSIONE HALL - HALL VERSION	
	CODICE CODE: DSL1C225	CODICE CODE: DSL1M8	CODICE CODE: DSL4N225	CODICE CODE: DSL4M8
				
Connezione Connection	Cavo Cable	Connettore M8 M8 Connection	Cavo Cable	Connettore M8 M8 Connection
Tensione d'esercizio Voltage range	3-130 V. AC/DC	3-130 V. AC/DC	10-30 V. DC	10-30 V. DC
Corrente max a 25°C Max current at 25°C	50 mA	50 mA	200 mA	200 mA
Potenza max/carico resistivo Max power/resistive load	10W	10W	6W	6W
Caduta di tensione max Max voltage drop	3.2V	3.2V	0.8V	0.8V
Contatto d'uscita Contact type	N.O.	N.O.	N.O.	N.O.
Segnalazione di commutazione Output status indicator	LED giallo/yellow	LED giallo/yellow	LED giallo/yellow	LED giallo/yellow
Tempo di inserzione Response time	0.5 ms max	0.5 ms max	0.2 ms max	0.2 ms max
Tempo di rilascio Decay time	0.1 ms max	0.1 ms max	0.1 ms max	0.1 ms max
Vita elettrica cicli (carico resistivo) Electric life (resistive load)	4x10 ⁷	4x10 ⁷	4x10 ⁷	4x10 ⁷
Tipo di cavo Cable type	PVC	PVC	PVC	PVC
Temperatura d'esercizio Working temperature	-20 +70°C	-20 +70°C	-20 +70°C	-20 +70°C
Grado di protezione Protection degree	IP 68	IP 68	IP 68	IP 68
Lunghezza cavo Cable length	2.5mt.	0.3mt.	2.5mt.	0.3mt.
USCITA OUTPUT	-	-	PNP	PNP
Colore cavo Cable colour	nero black	nero black	nero black	nero black
Fili Wires	2	2	3	3
Transitori extracorrente Overcurrent transients	Si-Yes	Si-Yes	No	No
Transitori extra tensione Overvoltage transients	No	No	No	No
Inversione di polarità Polarity reversal	Si-Yes	Si-Yes	Si-Yes	Si-Yes
Corto circuito Short circuit	No	No	No	No
Resistenza alla corrosione Corrosion resistance	3	3	3	3
Esplosione Atex explosion Atex	No	No	No	No
Tipo di cava Slot type	T	T	T	T
Tipo di montaggio al cilindro Type of mounting to the cylinder	Solo longitudinale Longitudinal only	Solo longitudinale Longitudinal only	Solo longitudinale Longitudinal only	Solo longitudinale Longitudinal only
Schema circuito Circuit diagram				
DISEGNO DRAW				

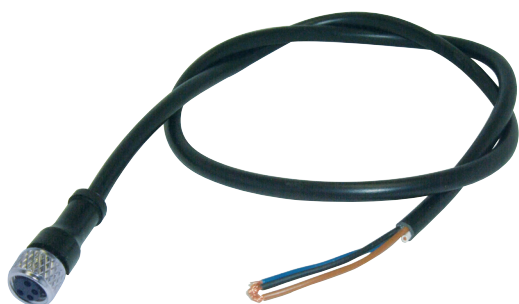
Staffa per sensori DSL da usare con minicilindro ISO 6432 e cilindri serie A95

Bracket for DSL to use with minicylinders ISO 6432 and Cylinders A95 Serie



Codice / Code	Ø mm.	F = Ø	A	B
MF008	8	9.4 mm	14	8
MF010	10	11.3 mm	14	8
MF012	12	13.3 mm	14	8
MF016	16	17.3 mm	14	8
MF020	20	21.3 mm	14	8
MF025	25	26.3 mm	14	8
AFX032	32	33.5 mm	14	8
AFX040	40	41.5 mm	14	8
AFX050	50	52 mm	14	8
AFX063	63	65 mm	14	8

Prolunga a Tre fili / Three Wires Extension



PX

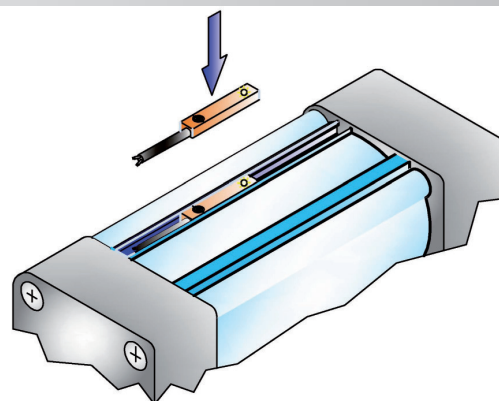
Codice / Code	LUNGHEZZA / LENGTH
PX3000	3000 mm
PX5000	5000 mm

Sensori Magnetici Serie DSH / *Magnetic Switches DSH Serie*

Sensori DSH con montaggio dall'alto per i seguenti modelli di cilindri:

DSH sensor above assembly for the following models of cylinders:

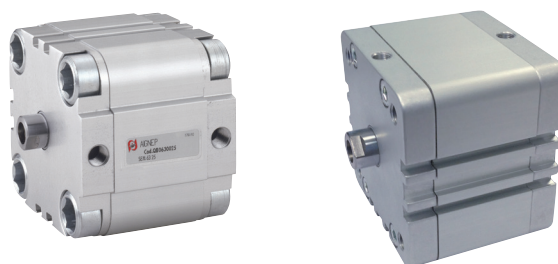
Minicilindri / *Mini Cylinders*



Minicilindri Inox / *Mini Cylinders Inox*



Cilindri Compatti / *Compact Cylinders*



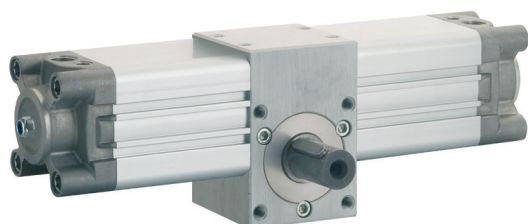
Cilindri Corsa Breve / *Short Stroke*



Cilindri Serie X / *Cylinders X Series*



Cilindri Serie X / *Cylinders X Series*








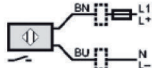
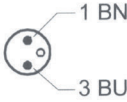
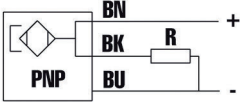
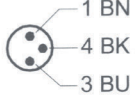
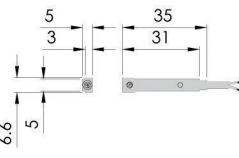
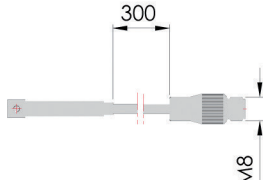

Cilindri Serie E / *Cylinders E Series*

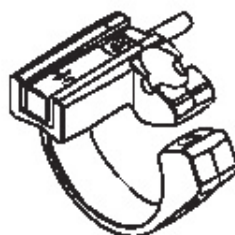


Cilindri Serie NHA / *Cylinders NHA Series*



Caratteristiche tecniche / Technical data

DESCRIZIONE <i>DESCRIPTION</i>	VERSIONE REED- REED VERSION		VERSIONE ELETTRONICO <i>ELECTRONIC VERSION</i>	
	CODICE <i>CODE</i> : DSH2R2F20	CODICE <i>CODE</i> : DSH2R2FM8	CODICE <i>CODE</i> : DSH4H3F20	CODICE <i>CODE</i> : DSH4H3FM8
				
Connessione <i>Connection</i>	Cavo <i>Cable</i>	Connettore M8 <i>M8 Connection</i>	Cavo <i>Cable</i>	Connettore M8 <i>M8 Connection</i>
Tensione d'esercizio <i>Voltage range</i>	5-120 V. AC/DC	5-120 V. AC/DC	10-30 V. DC	10-30 V. DC
Corrente max a 25°C <i>Max current at 25°C</i>	100 mA	100 mA	100 mA	100 mA
Potenza max/carico resistivo <i>Max power/resistive load</i>	10W	10W	-	-
Caduta di tensione max <i>Max voltage drop</i>	<5V	<5V	<2.5V	<2.5V
Contatto d'uscita <i>Contact type</i>	N.O.	N.O.	N.O. PNP	N.O. PNP
Segnalazione di commutazione <i>Output status indicator</i>	LED giallo/yellow	LED giallo/yellow	LED giallo/yellow	LED giallo/yellow
Tempo di inserzione <i>Response time</i>	0.5 ms max	0.5 ms max	-	-
Tempo di rilascio <i>Decay time</i>	0.1 ms max	0.1 ms max	<30 ms	<30 ms
Vita elettrica cicli (carico resistivo) <i>Electric life (resistive load)</i>	10 ⁷	10 ⁷	INFINITA	INFINITA
Tipo di cavo <i>Cable type</i>	PVC	PVC	PUR	PUR
Temperatura d'esercizio <i>Working temperature</i>	-20 +70°C	-20 +70°C	-25 +85°C	-25 +85°C
Grado di protezione <i>Protection degree</i>	IP 67 II	IP 67 II	IP 67	IP 67
Lunghezza cavo <i>Cable length</i>	2.5mt.	0.3mt.	2 mt.	0.3mt.
USCITA <i>OUTPUT</i>	-	-	-	-
Colore cavo <i>Cable colour</i>	nero black	nero black	nero black	nero black
Fili <i>Wires</i>	2	2	3	3
Transitori extracorrente <i>Overcurrent transients</i>	Si-Yes	Si-Yes	No	No
Transitori extra tensione <i>Overvoltage transients</i>	No	No	No	No
Inversione di polarità <i>Polarity reversal</i>	Si-Yes	Si-Yes	Si-Yes	Si-Yes
Corto circuito <i>Short circuit</i>	No	No	No	No
Resistenza alla corrosione <i>Corrosion resistance</i>	3	3	3	3
Esplosione Atex <i>explosion Atex</i>	No	No	No	No
Tipo di cava <i>Slot type</i>	T	T	T	T
Tipo di montaggio al cilindro <i>Type of mounting to the cylinder</i>	Assiale e longitudinale <i>Axial and Longitudinal</i>	Assiale e longitudinale <i>Axial and Longitudinal</i>	Assiale e longitudinale <i>Axial and Longitudinal</i>	Assiale e longitudinale <i>Axial and Longitudinal</i>
Schema circuito <i>Circuit diagram</i>				
DISEGNO <i>DRAW</i>				

Staffa per sensori DSH per minicilindri ISO 6432
Bracket for DSH sensors to use with minicylinders ISO 6432


Codice / Code	Ø mm.	F = Ø
MFH012	12	13.3 mm
MFH016	16	17.3 mm
MFH020	20	21.3 mm
MFH025	25	26.3 mm

Prolunga a Tre fili / Three Wires Extension

PX

CODE	LUNGHEZZA / LENGTH
PX3000	3000 mm
PX5000	5000 mm

Sensori Magnetici Serie DSN / Magnetic Switches DSN Serie

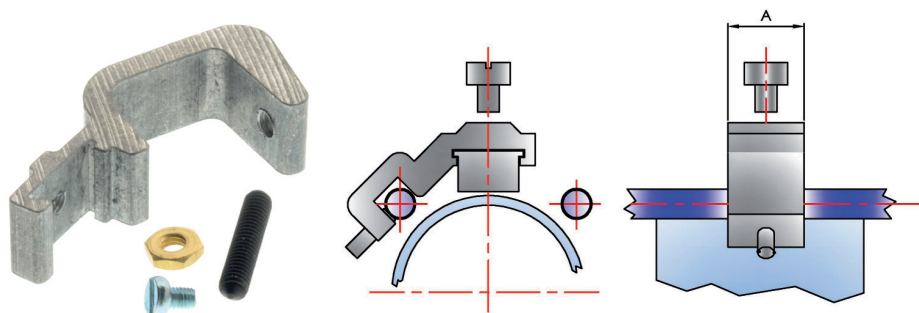
Caratteristiche tecniche / Technical data

DESCRIZIONE DESCRIPTION	VERSIONE REED REED VERSION CODICE CODE : DSN0R2F20	VERSIONE HALL HALL VERSION CODICE CODE : DSN1H3F20
Connessione Connection	Cavo Cable	Cavo Cable
Tensione d'esercizio Voltage range	3-250 V. AC/DC	10-30 V. DC
Corrente max a 25°C Max current at 25°C	1000 mA	200 mA
Potenza max/carico resistivo Max power/resistive load	50W	6W
Caduta di tensione max Max voltage drop	2.7V	0.5V
Contatto d'uscita Contact type	N.O.	N.O. PNP
Segnalazione di commutazione Output status indicator	LED Rosso/red	LED Rosso/red
Tempo di inserzione Response time	0.5 ms max	0.2 ms max
Tempo di rilascio Decay time	0.1 ms max	0.1 ms max
Vita elettrica cicli (carico resistivo) Electric life (resistive load)	10 ⁷	10 ⁷
Tipo di cavo Cable type	PVC CEI 2022	PVC
Temperatura d'esercizio Working temperature	-20 +70°C	-20 +70°C
Grado di protezione Protection degree	IP 65	IP 67
Lunghezza cavo Cable length	2 mt.	3 mt.
Colore cavo Cable colour	nero black	nero black
Fili Wires	2	3
Transitori extracorrente Overcurrent transients	Si-Yes	Si-Yes
Transitori extra tensione Overvoltage transients	No	No
Inversione di polarità Polarity reversal	Si-Yes	Si-Yes
Corto circuito Short circuit	No	No
Resistenza alla corrosione Corrosion resistance	3	3
Esplosione ATEX explosion ATEX	No	No
Tipo di montaggio al cilindro Type of mounting to the cylinder	Con Staffa With Bracket	Con Staffa With Bracket
Schema circuito Circuit diagram		
DISEGNO DRAW		



Sensori DSN per cilindri con tiranti
DSN sensor for cylinders with tie rods

Staffa per sensori DSN per cilindri con tiranti / Bracket for DSN sensors to use with cylinders with tie rods



Codice / Code	Ø mm.	A
DSN2XF032T	32-100	12
DSN2XF125T	125-160	12
DSN2XF200T	200-250	12