

RACCORDI FILETTATI

NICKEL-PLATED BRASS ADAPTORS

GEWINDEVERSCHRAUBUNGEN

ACCESSOIRES DE RACCORDEMENT- ADAPTATEURS LAITON

RACORDAJE ROSCADO

ACESSÓRIOS ROSCADOS EM LATÃO NIQUELADO



Serie Adapters

IT

La serie di Aignep, completamente realizzati in ottone nichelato, costituiscono il completamento dell'offerta in termini di adattatori, riduzioni, tappi e componenti per realizzare al meglio le vostre applicazioni e circuiterie. Con prestazioni importanti in termini di pressioni e temperature (+300°C), sono realizzati in una ampia gamma base. Filettature BSPT, BSPP e Metriche.

Completano la gamma un'importante serie di manifold di distribuzione in alluminio e di silenziatori in bronzo sinterizzato e materiali plastici.

Principali vantaggi

- Gamma completa M5 - 1"
- Filettati e portagomma
- Compatibilità numerosi fluidi industriali
- Robustezza meccanica
- Versione attacchi a baionetta standard
- Silicon Free

Applicazioni

- Aria Compressa
- Automazione Pneumatica
- Circuiti acqua industriale
- Gas inerti, vapore, fluidi
- Vuoto

Nickel-plated brass threaded adaptors is the argest range of Aignep.

Countless configurations in multiple sizes: nipples, reductions, plugs, T, L, hose adaptors.

High performances in pressure and temperatures (+300°C).

Sharp threads BSPT, BSPP & Metric.

Aluminium manifolds and silencers complete the range.

Main advantages

- Complete Range M5 - 1"
- All Fluids compatible
- Mechanical Resistance
- Standard and Bayonet connection
- Silicon Free

Applications

- Compressed Air
- Pneumatic Automation
- Industrial water circuits
- Inert Gases, Fluids, Steam
- Vacuum

GB

Die Messing vernickelten Gewindeadapter von Aignep, komplettieren das umfangreiche Sortiment.

Unzählige Konfigurationen in verschiedenen Größen: Nippel, Reduzierungen, Stopfen, T- und L-Verschraubungen, Schlauchtüllen, etc. Hohe Leistungen im Druck- und Temperaturbereich (+ 300 °C).

Präzise Gewinde: BSPT, BSPP und metrisch. Verteilerblöcke aus Aluminium und Schalldämpfer runden das Angebot ab

Hauptvorteile

- Vollständiges Sortiment M5 - 1"
- Kompatibel mit allen Medien
- Mechanische Festigkeit
- Standard and Bajonett Anschluss
- Silikonfrei

Anwendungen

- Druckluft
- Pneumatische Automation
- Industrielle Wasserkreisläufe
- Inertgase, Flüssigkeiten, Dampf
- Vakuum

FR

Les adaptateurs en laiton nickelé offre un grand choix de configurations possibles. Aignep propose une large gamme de mamelons, réductions, bouchons, T, L, adaptateurs pour tuyaux.

Performances élevées en terme de pression et de température (+ 300 °C).

Filetages BSPT, BSPP et métrique.

Les nourrices de distribution en aluminium et les silencieux complètent la gamme.

Pincipaux avantages

- Gamme complète M5 - 1"
- Tous fluides compatibles
- Résistance mécanique
- Standard et raccords Baïonnettes
- Sans silicone

Applications

- Air comprimé
- Automatismes pneumatiques
- Circuits d'eau industrielle
- Gaz neutres, vapeur
- Vide

ES

La serie de accesorios Aignep, completamente realizada en Latón niquelado, completa la oferta en términos de adaptadores, reducciones, tapones, y componentes para realizar de la mejor forma vuestras aplicaciones y circuitos.

Con importantes prestaciones en términos de presión y temperatura (+300°C), son realizados en una amplia gama base. Roscas BSPT, BSPP y Métricas.

Completan la gama una importante serie de regletas de distribución en aluminio y de silenciadores en bronce sinterizado y material plástico.

Principales ventajas

- Gama completa M5-1" – roscados y espiga
- Compatibilidad con numerosos fluidos industriales
- Robustez mecánica
- Versión conexión a bayoneta standard
- Libres de silicona

Aplicaciones

- Aire comprimido
- Automatización neumática
- Circuitos de agua industrial
- Gases inertes, vapor, fluidos
- Vacío

PT

Acessórios roscados em latão niquelado é o maior range de itens da linha da Aignep.

Incontáveis configurações em diversos tamanhos: niples, reduções, plugs, T, L, Espigões para mangueiras.

Itens para alta pressão e alta temperatura (+300°C).

Roscas precisas: BSPT, BSPP & Métrica, manifolds em alumínio e silenciadores completas o range de produtos.

Principais vantagens

- Completo Range de tamanhos : de M5 a 1"
- Compatível com todos os fluidos
- Resistência Mecânica
- Conexões do tipo standard e baioneta
- Livre de Silicone

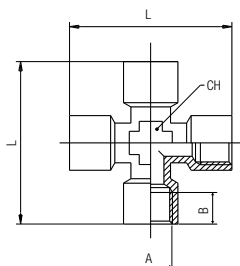
Aplicações

- Ar Comprimido
- Automação Pneumática
- Circuitos de Água Industrial
- Gases Inertes, Fluidos, Vapor
- Vácuo

6020

RACCORDO A CROCE FEMMINA

FEMALE EQUAL CROSS
KREUZVERSCHRAUBUNG INNENGEW.
CROIX ÉGALE FEMELLE
RACOR A CRUZ HEMBRA
CONEXÃO CRUZETA COM ROSCA FÊMEA

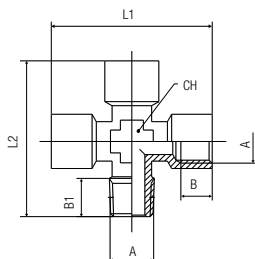


| Code | A | B | L | CH | Pack. |
|-------------------|-----|-----|----|----|-------|
| 06020 00 01 02 NB | 1/8 | 8.5 | 39 | 11 | 10 |
| 06020 00 01 03 NB | 1/4 | 11 | 50 | 13 | 10 |
| 06020 00 01 04 NB | 3/8 | 12 | 56 | 17 | 10 |
| 06020 00 01 05 NB | 1/2 | 15 | 64 | 20 | 10 |

6025

RACCORDO A CROCE MASCHIO-FEMMINA

MALE-FEMALE EQUAL CROSS
KREUZVERSCHRAUBUNG AUSSEN-/INNENGEW.
CROIX ÉGALE MÂLE/FEMELLE
RACOR A CRUZ MACHO-HEMBRA
CONEXÃO CRUZETA MACHO-FÊMEA

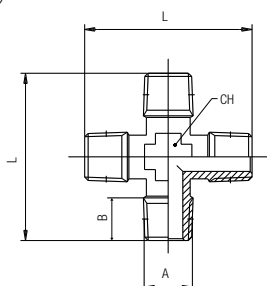


| Code | A | B | B1 | L1 | L2 | CH | Pack. |
|-------------------|-----|-----|------|----|------|----|-------|
| 06025 00 01 02 NB | 1/8 | 8.5 | 8 | 39 | 37 | 11 | 10 |
| 06025 00 01 03 NB | 1/4 | 11 | 11 | 50 | 48.5 | 13 | 10 |
| 06025 00 01 04 NB | 3/8 | 12 | 11.5 | 56 | 54 | 17 | 10 |
| 06025 00 01 05 NB | 1/2 | 15 | 14 | 64 | 61 | 20 | 10 |

6030

RACCORDO A CROCE MASCHIO

MALE EQUAL CROSS
KREUZVERSCHRAUBUNG AUSSENGEW.
CROIX ÉGALE MÂLE
RACOR A CRUZ MACHO
CONEXÃO CRUZETA COM ROSCA MACHO

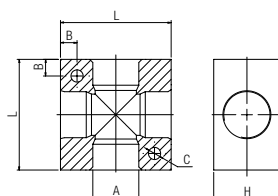


| Code | A | B | L | CH | Pack. |
|-------------------|-----|------|----|----|-------|
| 06030 00 01 02 NB | 1/8 | 8 | 35 | 11 | 10 |
| 06030 00 01 03 NB | 1/4 | 11 | 47 | 13 | 10 |
| 06030 00 01 04 NB | 3/8 | 11.5 | 52 | 17 | 10 |
| 06030 00 01 05 NB | 1/2 | 14 | 58 | 20 | 10 |

6040

RACCORDO A CROCE IN ALLUMIMIO

ALUMINIUM TEE CROSS
KREUZVERTEILER AUS ALUMINIUM
CROIX DE DISTRIBUTION EN ALUMINIUM
RACOR A CRUZ EN ALUMINIO
CONEXÃO CRUZETA EM ALUMÍNIO

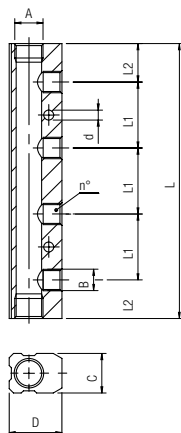


| Code | A | L | H | B | C | Pack. |
|-------------------|-----|----|----|-----|-----|-------|
| 06040 00 11 02 AG | 1/8 | 25 | 15 | 4.3 | 4.5 | 10 |
| 06040 00 11 03 AG | 1/4 | 40 | 20 | 6.5 | 5.5 | 10 |
| 06040 00 11 04 AG | 3/8 | 50 | 25 | 7.5 | 5.5 | 5 |
| 06040 00 11 05 AG | 1/2 | 50 | 30 | 7.5 | 5.5 | 5 |

6047

RIPARTITORE IN ALLUMINIO

ALUMINIUM DISTRIBUTION MANIFOLD
 VERTEILERBLOCK AUS ALUMINIUM
 NOURRICE DE DISTRIBUTION EN ALUMINIUM
 REGLETA SIMPLE EN ALUMINIO
 DISTRIBUIDOR EM ALUMÍNIO

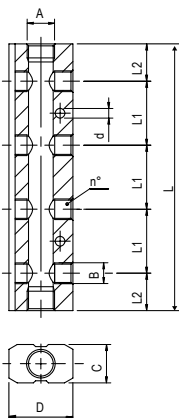


| Code | A | B | n° | C | D | L1 | L2 | L | d | Pack. |
|-------------------|-----|-----|----|----|----|----|------|-----|-----|-------|
| 06047 00 11 AJ AG | 1/4 | 1/8 | 2 | 18 | 24 | 30 | 17.5 | 65 | 4.5 | 5 |
| 06047 00 11 AK AG | 1/4 | 1/8 | 3 | 18 | 24 | 30 | 17.5 | 95 | 4.5 | 5 |
| 06047 00 11 AW AG | 1/4 | 1/8 | 4 | 18 | 24 | 30 | 17.5 | 125 | 4.5 | 5 |
| 06047 00 11 BA AG | 1/4 | 1/8 | 5 | 18 | 24 | 30 | 17.5 | 155 | 4.5 | 5 |
| 06047 00 11 BB AG | 1/4 | 1/8 | 6 | 18 | 24 | 30 | 17.5 | 185 | 4.5 | 5 |
| 06047 00 11 BC AG | 3/8 | 1/4 | 2 | 22 | 30 | 36 | 20 | 76 | 5.5 | 5 |
| 06047 00 11 BD AG | 3/8 | 1/4 | 3 | 22 | 30 | 36 | 20 | 112 | 5.5 | 5 |
| 06047 00 11 BE AG | 3/8 | 1/4 | 4 | 22 | 30 | 36 | 20 | 148 | 5.5 | 5 |
| 06047 00 11 BF AG | 3/8 | 1/4 | 5 | 22 | 30 | 36 | 20 | 184 | 5.5 | 5 |
| 06047 00 11 BG AG | 3/8 | 1/4 | 6 | 22 | 30 | 36 | 20 | 220 | 5.5 | 5 |
| 06047 00 11 ES AG | 1/2 | 3/8 | 2 | 26 | 35 | 40 | 25 | 90 | 5.5 | 5 |
| 06047 00 11 ET AG | 1/2 | 3/8 | 3 | 26 | 35 | 40 | 25 | 130 | 5.5 | 5 |
| 06047 00 11 EU AG | 1/2 | 3/8 | 4 | 26 | 35 | 40 | 25 | 170 | 5.5 | 5 |
| 06047 00 11 EV AG | 1/2 | 3/8 | 5 | 26 | 35 | 40 | 25 | 210 | 5.5 | 5 |
| 06047 00 11 EZ AG | 1/2 | 3/8 | 6 | 26 | 35 | 40 | 25 | 250 | 5.5 | 5 |

6048

RIPARTITORE DOPPIO IN ALLUMINIO

ALUMINIUM DOUBLE DISTRIBUTION MANIFOLD
 DOPPELTER VERTEILERBLOCK AUS ALUMINIUM
 NOURRICE DE DISTRIBUTION DOUBLE EN ALUMINIUM
 REGLETA DOBLE EN ALUMINIO
 DISTRIBUIDOR DUPLO EM ALUMÍNIO

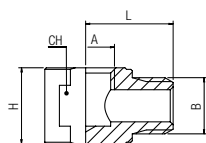


| Code | A | B | n° | C | D | L1 | L2 | L | d | Pack. |
|-------------------|-----|-----|----|----|----|----|------|-----|-----|-------|
| 06048 00 11 AJ AG | 1/4 | 1/8 | 2 | 18 | 30 | 30 | 17.5 | 65 | 4.5 | 5 |
| 06048 00 11 AK AG | 1/4 | 1/8 | 3 | 18 | 30 | 30 | 17.5 | 95 | 4.5 | 5 |
| 06048 00 11 AW AG | 1/4 | 1/8 | 4 | 18 | 30 | 30 | 17.5 | 125 | 4.5 | 5 |
| 06048 00 11 BA AG | 1/4 | 1/8 | 5 | 18 | 30 | 30 | 17.5 | 155 | 4.5 | 5 |
| 06048 00 11 BB AG | 1/4 | 1/8 | 6 | 18 | 30 | 30 | 17.5 | 185 | 4.5 | 5 |
| 06048 00 11 BC AG | 3/8 | 1/4 | 2 | 22 | 38 | 36 | 20 | 76 | 5.5 | 5 |
| 06048 00 11 BD AG | 3/8 | 1/4 | 3 | 22 | 38 | 36 | 20 | 112 | 5.5 | 5 |
| 06048 00 11 BE AG | 3/8 | 1/4 | 4 | 22 | 38 | 36 | 20 | 148 | 5.5 | 5 |
| 06048 00 11 BF AG | 3/8 | 1/4 | 5 | 22 | 38 | 36 | 20 | 184 | 5.5 | 5 |
| 06048 00 11 BG AG | 3/8 | 1/4 | 6 | 22 | 38 | 36 | 20 | 220 | 5.5 | 5 |
| 06048 00 11 ES AG | 1/2 | 3/8 | 2 | 26 | 44 | 40 | 25 | 90 | 5.5 | 5 |
| 06048 00 11 ET AG | 1/2 | 3/8 | 3 | 26 | 44 | 40 | 25 | 130 | 5.5 | 5 |
| 06048 00 11 EU AG | 1/2 | 3/8 | 4 | 26 | 44 | 40 | 25 | 170 | 5.5 | 5 |
| 06048 00 11 EV AG | 1/2 | 3/8 | 5 | 26 | 44 | 40 | 25 | 210 | 5.5 | 5 |
| 06048 00 11 EZ AG | 1/2 | 3/8 | 6 | 26 | 44 | 40 | 25 | 250 | 5.5 | 5 |

6070

RACCORDO A L MASCHIO-FEMMINA

MALE-FEMALE ELBOW FITTING
 WINKELVERSCHRAUBUNG AUSSEN-/INNENGEW.
 RACCORD EQUERRE MÂLE/FEMELLE
 RACOR A L MACHO HEMBRA
 CONEXÃO EM "L" MACHO-FÊMEA

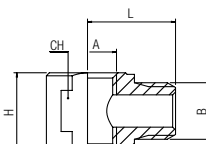


| Code | A | B | H | L | CH | Pack. |
|-------------------|-----|-----|----|----|----|-------|
| 06070 00 01 2W NB | 1/8 | 1/8 | 13 | 15 | 13 | 10 |
| 06070 00 01 6W NB | 1/4 | 1/4 | 18 | 19 | 18 | 10 |

6080

RACCORDO A T MASCHIO-FEMMINA-FEMMINA

MALE-FEMALE-FEMALE TEE FITTING
 T-VERSCHRAUBUNG AUSSEN-/INNEN-/INNENGEW.
 RACCORD TÊ MÂLE / FEMELLE
 RACOR A T MACHO-HEMBRA-HEMBRA
 CONEXÃO EM "T" MACHO-FÊMEA



| Code | A | B | H | L | CH | Pack. |
|-------------------|-----|-----|----|------|----|-------|
| 06080 00 01 2W NT | 1/8 | 1/8 | 13 | 15 | 13 | 10 |
| 06080 00 01 6W NT | 1/4 | 1/4 | 18 | 18.5 | 18 | 10 |