

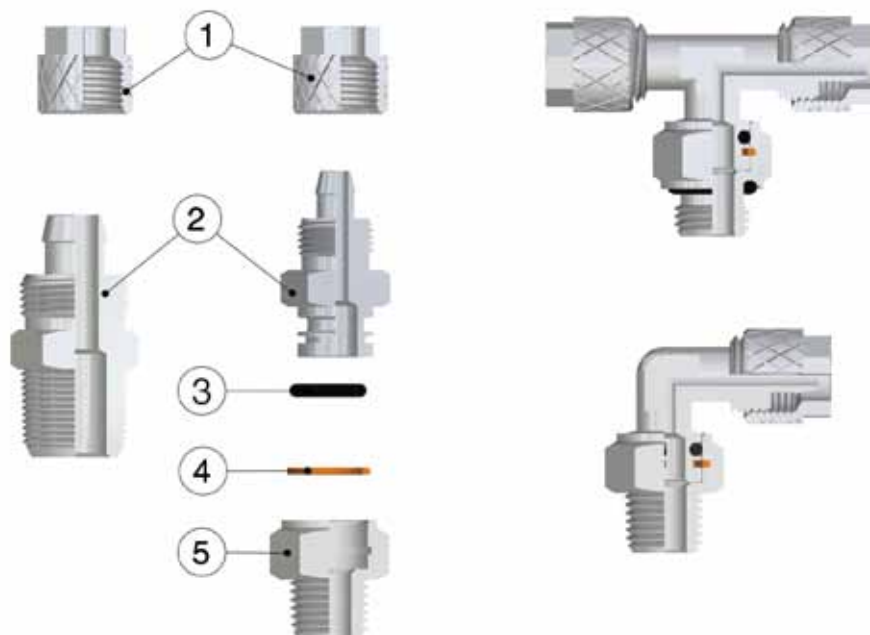


1000

# Serie 1000

**RACCORDI A CALZAMENTO**  
*PUSH-ON FITTINGS*

## Caratteristiche Tecniche / Technical Characteristics



## Materiali e Componenti / Component Parts and Materials

- |                                |                            |
|--------------------------------|----------------------------|
| 1 Dado in Ottone Nichelato     | 1 Nickel-plated Brass Nut  |
| 2 Corpo in Ottone Nichelato    | 2 Nickel-plated Brass Body |
| 3 Guarnizione O-Ring in NBR 70 | 3 NBR 70 O-RING Seals      |
| 4 Seeger in Bronzo             | 4 Bronze Seeger            |
| 5 Base in ottone Nichelato     | 5 Nickel-plated Brass Base |

**IN NESSUN CASO I RACCORDI "GIREVOLI" DEVONO ESSERE IMPIEGATI COME GIUNTI ROTANTI. UNDER NO CIRCUMSTANCES, THE "SWIVEL" FITTINGS CAN BE USED AS REVOLVING JOINTS.**

## Pressioni e Temperature / Pressures and Temperatures

Pressioni e temperature sono determinate dal tipo di tubo impiegato, pertanto tali valori sono da definirsi in base alle caratteristiche del tubo stesso. *The working pressures and working temperatures depend on which type of tube is used, for this reason, the values must be determined in accordance with the tube's features.*

Per i raccordi nella versione "girevole e O-RING sul filetto" i valori sono:  
For the "swivel and thread with O-RING" fittings, the values are:

### Pressioni / Pressures

Pressione minima / Minimum pressure: **-0.99 bar (-0.099 MPa)**

Pressione massima / Maximum pressure: **15 bar (1.5 MPa)**

### Filettature / Threads

**Gas conica conforme ISO 7.1, BS 21, DIN 2999**

*Tapered gas in conformity with ISO 7.1, BS 21, DIN 2999.*

**Gas cilindrica conforme ISO 228 Classe A**

*Parallel gas in conformity with ISO 228 Class A.*

**Metrica conforme ISO R/262 /Metric in conformity with ISO R/262.**

### Fluidi compatibili / Fluids

**Aria compressa. Fluidi e liquidi a bassa pressione compatibili con il tipo di accoppiamento.**

*Compressed air. Fluids and liquids at low pressure compatible with the connection.*

### Tubi di collegamento / Connection Tubes

**Tubi in materiale plastico:**

**PA6, PA11, PA 12, Polietilene, Poliuretano, ecc..**

*Plastic tubes:*

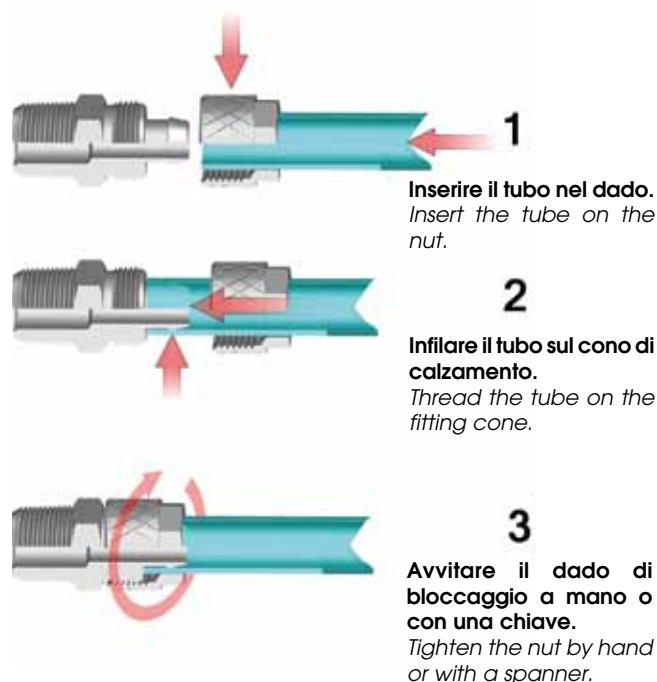
*PA6, PA11, PA12, Polyethylene, Polyurethane, ecc.*

### Temperature / Temperatures

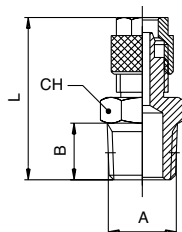
Temperatura minima / Minimum temperature: **-20 °C**

Temperatura massima / Maximum temperature: **+80 °C**

## Montaggio / Assembling

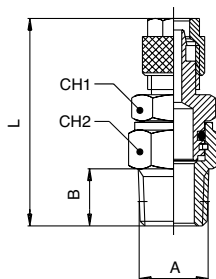


# 1000

**RACCORDO DIRITTO MASCHIO CONICO - STRAIGHT MALE ADAPTOR (TAPER)**


Codice Code	Tubo Tube	A	B	L	CH	Conf. Pack.
010000001	4/2.7	1/8	7.5	23.5	12	50
010000002	5/3	1/8	7.5	23	12	50
010000003	6/4	1/8	7.5	25.6	12	50
010000004	6/4	1/4	11	29.6	14	50
010000005	6/4	3/8	11.5	30	17	25
010000006	8/6	1/8	7.5	26.9	14	50
010000007	8/6	1/4	11	30.9	14	50
010000008	8/6	3/8	11.5	31.4	17	25
010000009	8/6	1/2	14	34	22	25
010000010	10/8	1/8	7.5	29	14	50
010000011	10/8	1/4	11	33	14	25
010000012	10/8	3/8	11.5	33.5	17	25
010000013	10/8	1/2	14	36.5	22	25
010000014	12/10	3/8	11.5	35	17	25
010000015	12/10	1/2	14	38	22	25
010000016	15/12.5	1/2	14	40	22	25

# 1010

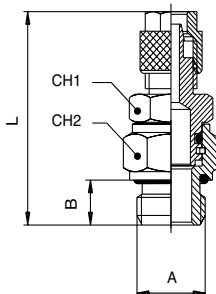
**RACCORDO DIRITTO ORIENTABILE MASCHIO CONICO - ORIENTING STRAIGHT MALE ADAPTOR (TAPER)**


Codice Code	Tubo Tube	A	B	L	CH1	CH2	Conf. Pack.
010100001	6/4	1/8	7.5	33.5	12	13	50
010100002	6/4	1/4	11	40	14	15	50
010100003	8/6	1/8	7.5	33.5	12	13	50
010100004	8/6	1/4	11	40	14	15	25
010100007	10/6.5	1/4	11	41	14	15	25
010100005	10/8	1/4	11	41	14	15	25
010100008	12/8	3/8	11.5	43.5	17	17	25
010100006	12/10	3/8	11.5	43.5	17	17	25

Misure specifiche per tubi in POLIURETANO.  
Particular sizes for the POLYURETHANE tubing.

Per tubo in POLIURETANO da 8/5 consigliamo l'utilizzo della nostra misura standard 8/6.  
For the POLYURETHANE tube 8/5 we suggest to use the standard size 8/6.

# 1015

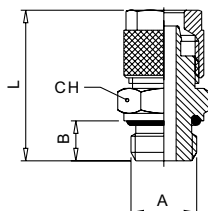
**RACCORDO DIRITTO ORIENTABILE MASCHIO CILINDRICO - ORIENTING STRAIGHT MALE ADAPTOR (PARALLEL)**


Codice Code	Tubo Tube	A	B	L	CH1	CH2	Conf. Pack.
010150001	6/4	1/8	6	34	12	13	50
010150002	6/4	1/4	8	38	14	16	50
010150003	8/6	1/8	6	34	12	13	50
010150004	8/6	1/4	8	38	14	16	25
010150005	10/6.5	1/4	8	40	14	16	25
010150006	10/8	1/4	8	39	14	16	25
010150007	12/8	3/8	9	42.5	17	18	25
010150008	12/10	3/8	9	42.5	17	18	25

Misure specifiche per tubi in POLIURETANO.  
Particular sizes for the POLYURETHANE tubing.

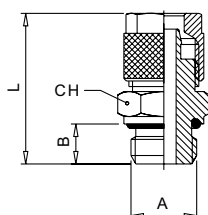
Per tubo in POLIURETANO da 8/5 consigliamo l'utilizzo della nostra misura standard 8/6.  
For the POLYURETHANE tube 8/5 we suggest to use the standard size 8/6.

# 1020

**RACCORDO DIRITTO MASCHIO CILINDRICO - STRAIGHT MALE ADAPTOR (PARALLEL)**


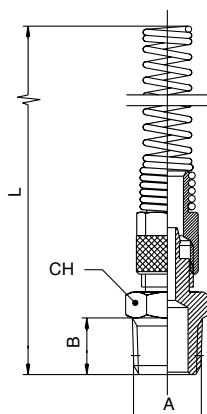
Codice Code	Tubo Tube	A	B	L	CH	Conf. Pack.
010200001	4/2.7	1/8	6	23	13	50
010200002	5/3	1/8	6	25.1	13	50
010200003	6/4	1/8	6	25.1	13	50
010200004	6/4	1/4	8	28.1	16	50
010200005	6/4	3/8	9	29.1	19	25
010200006	6/4	1/2	10	32	24	25
010200007	8/6	1/8	6	26.4	14	50
010200008	8/6	1/4	8	29.4	16	25
010200009	8/6	3/8	9	30.4	19	25
010200010	8/6	1/2	10	32	24	25
010200011	10/8	1/8	6	28.5	14	25
010200012	10/8	1/4	8	31.5	16	25
010200013	10/8	3/8	9	32.5	19	25
010200014	10/8	1/2	10	34.5	24	25
010200015	12/10	3/8	9	34	19	25
010200016	12/10	1/2	10	36	24	25
010200017	15/12.5	1/2	10	38	24	25

# 1021

**RACCORDO DIRITTO MASCHIO CON FILETTATURE METRICHE - STRAIGHT MALE ADAPTOR WITH METRIC THREAD**


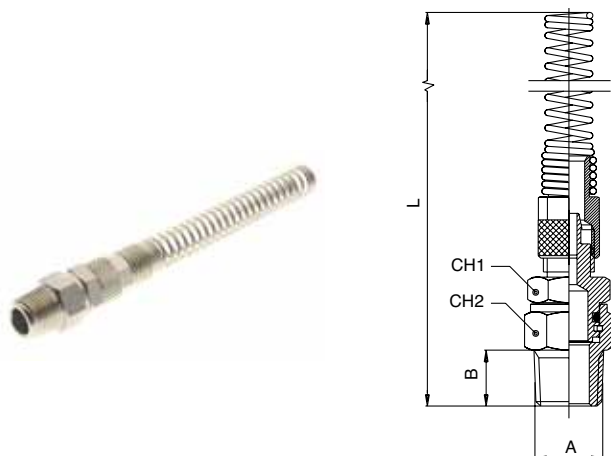
Codice Code	Tubo Tube	A	B	L	CH	Conf. Pack.
010210001	4/2.7	M5	4	20.5	8	50
010210002	4/2.7	M6	5	21.5	8	50
010210003	5/3	M5	4	23.1	8	50
010210004	5/3	M6	5	23.1	8	50
010210005	6/4	M5	4	23.1	8	50
010210006	6/4	M6	5	23.1	8	50
010210007	6/4	M12x1	8	28.1	15	25
010210008	6/4	M12x1.25	8	28.1	15	25
010210009	6/4	M12x1.5	8	28.1	15	25

# 1025

**RACCORDO DIRITTO MASCHIO CONICO + DADO CON MOLLA - STRAIGHT MALE ADAPTOR (TAPER) + NUT WITH SPRING**


Codice Code	Tubo Tube	A	B	L	CH	Conf. Pack.
010250001	6/4	1/8	7.5	108	12	25
010250002	6/4	1/4	11	112.5	14	25
010250003	8/6	1/8	7.5	113.5	14	25
010250004	8/6	1/4	11	118	14	25
010250005	8/6	3/8	11.5	119	17	25
010250006	8/6	1/2	14	121	22	25
010250007	10/8	1/8	7.5	122	14	25
010250008	10/8	1/4	11	126	14	25
010250009	10/8	3/8	11.5	127	17	25
010250010	10/8	1/2	14	130	22	25
010250011	12/10	3/8	11.5	134	17	25
010250012	12/10	1/2	14	137	22	25

# 1026

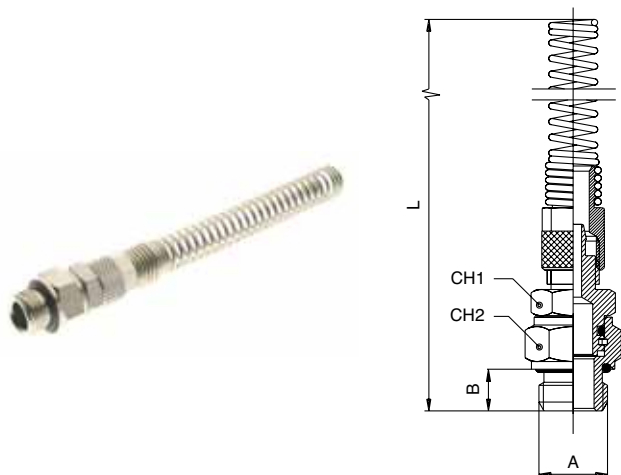
**RACCORDO DIRITTO ORIENTABILE MASCHIO CONICO + DADO CON MOLLA - ORIENTING STRAIGHT MALE ADAPTOR (TAPER) + NUT WITH SPRING**


Codice Code	Tubo Tube	A	B	L	CH1	CH2	Conf. Pack.
0102600001	6/4	1/8	7.5	117.5	12	13	25
0102600002	6/4	1/4	11	121	14	15	25
0102600003	8/6	1/8	7.5	121	12	13	25
0102600004	8/6	1/4	11	128	14	15	25
0102600005	10/6.5	1/4	11	135	14	15	25
0102600006	10/8	1/4	11	136	14	15	25
0102600007	12/8	3/8	11.5	144	17	17	25
0102600008	12/10	3/8	11.5	144	17	17	25

Misure specifiche per tubi in POLIURETANO.  
Particular sizes for the POLYURETHANE tubing.

Per tubo in POLIURETANO da 8/5 consigliamo l'utilizzo della nostra misura standard 8/6.  
For the POLYURETHANE tube 8/5 we suggest to use the standard size 8/6.

# 1027

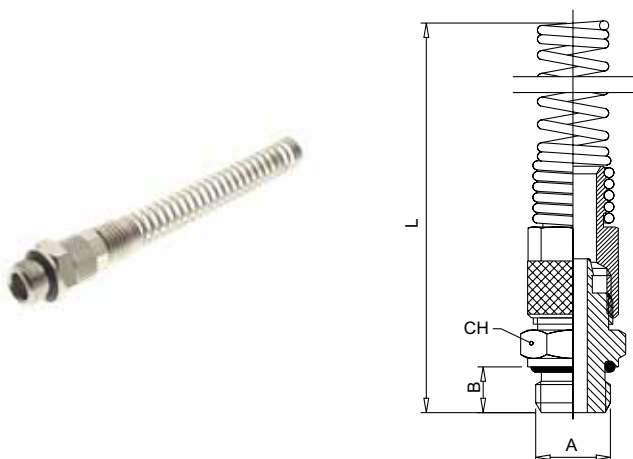
**RACCORDO DIRITTO ORIENTABILE MASCHIO CILINDRICO + DADO CON MOLLA - ORIENTING STRAIGHT MALE ADAPTOR (PARALLEL) + NUT WITH SPRING**


Codice Code	Tubo Tube	A	B	L	CH1	CH2	Conf. Pack.
0102700001	6/4	1/8	6	116	12	13	25
0102700002	6/4	1/4	8	121	14	16	25
0102700003	8/6	1/8	6	122	12	13	25
0102700004	8/6	1/4	8	126	14	16	25
0102700005	10/6.5	1/4	8	134	14	16	25
0102700006	10/8	1/4	8	134	14	16	25
0102700007	12/8	3/8	9	143	17	18	25
0102700008	12/10	3/8	9	142	17	18	25

Misure specifiche per tubi in POLIURETANO.  
Particular sizes for the POLYURETHANE tubing.

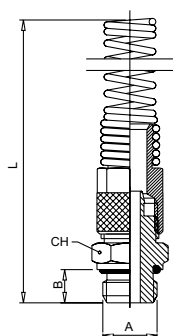
Per tubo in POLIURETANO da 8/5 consigliamo l'utilizzo della nostra misura standard 8/6.  
For the POLYURETHANE tube 8/5 we suggest to use the standard size 8/6.

# 1028

**RACCORDO DIRITTO MASCHIO CILINDRICO + DADO CON MOLLA - STRAIGHT MALE ADAPTOR (PARALLEL) + NUT WITH SPRING**


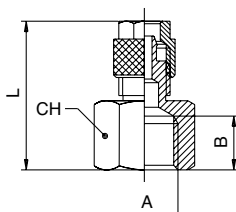
Codice Code	Tubo Tube	A	B	L	CH	Conf. Pack.
0102800001	6/4	1/8	6	109	13	25
0102800002	6/4	1/4	8	111	16	25
0102800003	6/4	3/8	9	112	19	25
0102800004	6/4	1/2	10	114	24	25
0102800005	8/6	1/8	6	114	14	25
0102800006	8/6	1/4	8	116.5	16	25
0102800007	8/6	3/8	9	117.5	19	25
0102800008	8/6	1/2	10	119.5	24	25
0102800009	10/8	1/8	6	121.5	14	25
0102800010	10/8	1/4	8	125.5	16	25
0102800011	10/8	3/8	9	125.5	19	25
0102800012	10/8	1/2	10	128.5	24	25
0102800013	12/10	3/8	9	133	19	25
0102800014	12/10	1/2	10	134.5	24	25

# 1029

**RACCORDO DIRITTO MASCHIO CON FILETTATURE METRICHE + DADO CON MOLLA - STRAIGHT MALE ADAPTOR WITH METRIC THREAD + NUT WITH SPRING**


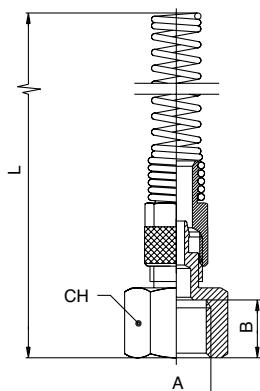
Codice Code	Tubo Tube	A	B	L	CH	Conf. Pack.
010290001	6/4	M12x1	8	111	15	25
010290002	6/4	M12x1.25	8	111	15	25
010290003	6/4	M12x1.5	8	111	15	25

# 1030

**RACCORDO DIRITTO FEMMINA - STRAIGHT FEMALE ADAPTOR**


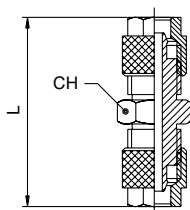
Codice Code	Tubo Tube	A	B	L	CH	Conf. Pack.
010300001	6/4	1/8	8.5	23.3	14	50
010300002	6/4	1/4	11	27	17	50
010300003	6/4	3/8	11.5	28	22	25
010300004	8/6	1/8	8	24.7	14	50
010300005	8/6	1/4	11	28.7	17	25
010300006	8/6	3/8	11.5	29.2	22	25
010300007	8/6	1/2	15.5	33	24	25
010300008	10/8	1/4	11	30.5	17	25
010300009	10/8	3/8	11.5	31	22	25
010300010	10/8	1/2	15.5	34.5	24	25
010300011	12/10	3/8	11.5	32.5	22	25

# 1035

**RACCORDO DIRITTO FEMMINA + DADO CON MOLLA - STRAIGHT FEMALE ADAPTOR + NUT WITH SPRING**


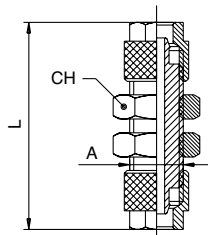
Codice Code	Tubo Tube	A	B	L	CH	Conf. Pack.
010350001	6/4	1/8	8.5	106	14	25
010350002	6/4	1/4	11	109	17	25
010350003	6/4	3/8	11.5	110	22	25
010350004	8/6	1/8	8	112	14	25
010350005	8/6	1/4	11	115.5	17	25
010350006	8/6	3/8	11.5	116	22	25
010350007	8/6	1/2	15.5	119.5	24	25
010350008	10/8	1/4	11	123	17	25
010350009	10/8	3/8	11.5	124.5	22	25
010350010	10/8	1/2	15.5	128.5	24	25
010350011	12/10	3/8	11.5	131	22	25

# 1040

**RACCORDO DIRITTO INTERMEDIO - STRAIGHT CONNECTOR**


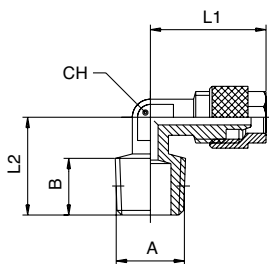
Codice Code	Tubo Tube	Tubo Tube	L	CH	Conf. Pack.
010400001	4/2.7		27.5	8	50
010400002	5/3		31.7	8	50
010400003	6/4	5/3	32.2	12	50
010400004	6/4		32.2	12	50
010400005	8/6	6/4	33.5	12	25
010400006	8/6		34.8	12	25
010400007	10/8	6/4	35.6	14	25
010400008	10/8	8/6	36.9	14	25
010400009	10/8		39	14	25
010400010	12/10		43	17	25
010400011	15/12.5		47	22	25

# 1050

**RACCORDO INTERMEDIO DI ATTRAVERSAMENTO - BULKHEAD CONNECTOR**


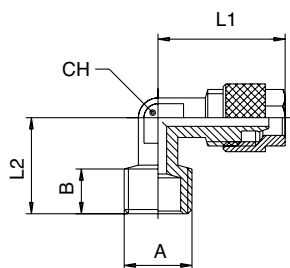
Code Code	Tube Tube	A	L	CH	Conf. Pack.
010500001	4/2.7	M6x0.5	35	10	50
010500002	5/3	M7x0.75	35	10	50
010500003	6/4x5/3	M10x1	45.5	14	50
010500004	6/4	M10x1	45.5	14	25
010500005	8/6x6/4	M12x1	47.3	17	25
010500006	8/6	M12x1	48.4	17	25
010500007	10/8x6/4	M14x1	49.8	17	25
010500008	10/8x8/6	M14x1	51.2	17	25
010500009	10/8	M14x1	52	17	25
010500010	12/10	M16x1	57	19	25
010500011	15/12.5	M20x1	59	24	25

# 1100

**RACCORDO A L MASCHIO CONICO - ELBOW MALE ADAPTOR (TAPER)**


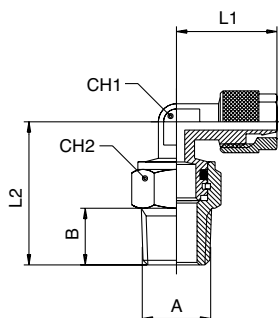
Code Code	Tube Tube	A	B	L1	L2	CH	Conf. Pack.
011000001	4/2.7	1/8	7.5	19.5	15	8	50
011000002	5/3	1/8	7.5	19.5	15	8	50
011000003	6/4	1/8	7.5	19.5	15	8	50
011000004	6/4	1/4	11	20.6	19	8	50
011000005	6/4	3/8	11.5	21	21	9	25
011000006	8/6	1/8	7.5	19.9	16.5	9	50
011000007	8/6	1/4	11	21.9	19	9	50
011000008	8/6	3/8	11.5	23.4	21	9	25
011000009	8/6	1/2	14	26	28	16	25
011000010	10/8	1/8	7.5	25	18	11	25
011000011	10/8	1/4	11	24	22	11	25
011000012	10/8	3/8	12.5	25.5	22.5	11	25
011000013	10/8	1/2	14	28	28	16	25
011000014	12/10	3/8	11.5	27	22.5	13	25
011000015	12/10	1/2	14	30	28	16	25
011000016	15/12.5	1/2	14	31.5	28	16	25

# 1101

**RACCORDO A L CON FILETTATURE METRICHE - ELBOW MALE ADAPTOR WITH METRIC THREAD**


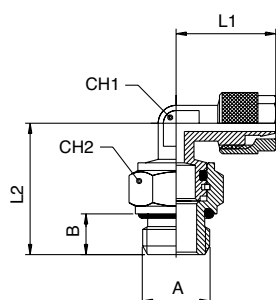
Code Code	Tube Tube	A	B	L1	L2	CH	Conf. Pack.
011010001	6/4	M12x1	11	20.6	19	8	25
011010002	6/4	M12x1.25	11	20.6	19	8	25
011010003	6/4	M12x1.5	11	20.6	19	8	25

# 1110

**RACCORDO A L ORIENTABILE MASCHIO CONICO - ORIENTING ELBOW MALE ADAPTOR (TAPER)**


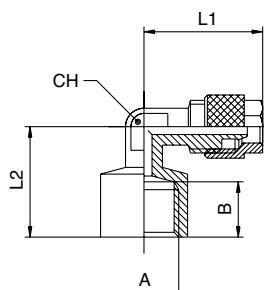
Code Code	Tube Tube	A	B	L1	L2	CH1	CH2	Conf. Pack.
011100006	4/2.7	1/8	7.5	20	22.5	8	13	50
011100001	6/4	1/8	7.5	20.6	22.5	8	13	50
011100002	6/4	1/4	11	20.6	28	8	15	25
011100003	8/6	1/8	7.5	21.6	22.5	9	13	25
011100004	8/6	1/4	11	23.1	28.5	9	15	25
011100005	10/8	1/4	11	24	30.5	11	15	25

# 1115

**RACCORDO A L ORIENTABILE MASCHIO CILINDRICO - ORIENTING ELBOW MALE ADAPTOR (PARALLEL)**


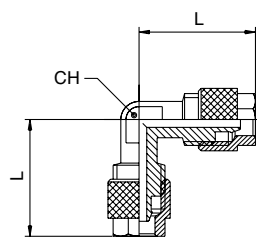
Codice Code	Tubo Tube	A	B	L1	L2	CH1	CH2	Conf. Pack.
0111500006	4/2.7	1/8	6	18.5	22	8	13	50
0111500001	6/4	1/8	6	20.6	22	8	13	50
0111500002	6/4	1/4	8	20.6	26	8	16	25
0111500003	8/6	1/8	6	21.6	21.6	9	13	25
0111500004	8/6	1/4	8	23.1	26.5	9	16	25
0111500005	10/8	1/4	8	24	27.5	11	16	25

# 1120

**RACCORDO A L FEMMINA - ELBOW FEMALE ADAPTOR**


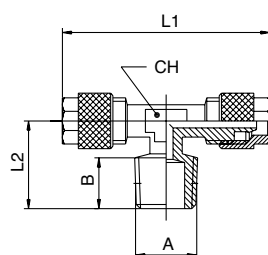
Codice Code	Tubo Tube	A	B	L1	L2	CH	Conf. Pack.
0112000001	5/3	1/8	8.5	20.6	18	8	50
0112000002	6/4	1/8	8.5	20.6	18	8	50
0112000003	6/4	1/4	10.5	21	21	9	25
0112000004	8/6	1/8	8.5	21.9	19	9	25
0112000005	8/6	1/4	10.5	23.4	21	9	25
0112000006	10/8	1/4	10.5	25.5	22.5	11	25
0112000007	10/8	3/8	11.5	28	27	16	25

# 1130

**RACCORDO A L INTERMEDIO - ELBOW CONNECTOR**


Codice Code	Tubo Tube	Tubo Tube	L	CH	Conf. Pack.
0113000001	4/2.7		20	8	50
0113000002	5/3		20.6	8	50
0113000003	6/4		20.6	8	50
0113000004	8/6	6/4	21.9	9	25
0113000005	8/6		21.9	9	25
0113000006	10/8		25.5	11	25
0113000007	12/10		27	13	25
0113000008	15/12.5		33.5	16	25

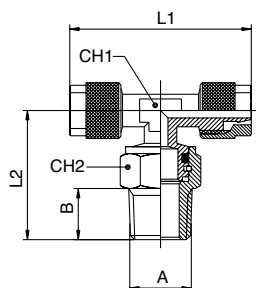
# 1200

**RACCORDO A T MASCHIO CONICO - TEE MALE ADAPTOR (TAPER) - CENTRE LEG**


Codice Code	Tubo Tube	A	B	L1	L2	CH	Conf. Pack.
0120000001	4/2.7	1/8	7.5	37	15.5	8	50
0120000002	5/3	1/8	7.5	39	15.5	8	50
0120000003	6/4	1/8	7.5	39	15.5	8	50
0120000004	6/4	1/4	11	41.2	19	8	25
0120000005	8/6	1/8	7.5	39.8	16.5	9	25
0120000006	8/6	1/4	11	43.8	20.5	9	25
0120000007	10/8	1/8	7.5	48	19	11	25
0120000008	10/8	1/4	11	48	22	11	25
0120000009	10/8	3/8	11.5	51	22	11	25
0120000010	12/10	3/8	11.5	54	22.5	14	25
0120000011	15/12.5	1/2	14	63	28	16	25

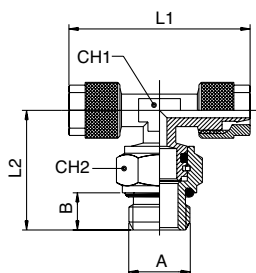


# 1210

**RACCORDO A T ORIENTABILE MASCHIO CONICO - ORIENTING TEE MALE ADAPTOR (TAPER) - CENTRE LEG**


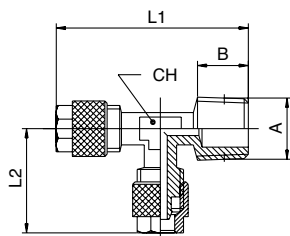
Codice Code	Tubo Tube	A	B	L1	L2	CH1	CH2	Conf. Pack.
012100001	6/4	1/8	7.5	41.2	22.5	8	13	25
012100002	6/4	1/4	11	41.2	28	8	15	25
012100003	8/6	1/8	7.5	43.2	24.5	9	13	25
012100004	8/6	1/4	11	43.2	29.5	9	15	25
012100005	10/8	1/4	11	48	29.5	11	15	25

# 1215

**RACCORDO A T ORIENTABILE MASCHIO CILINDRICO - ORIENTING TEE MALE ADAPTOR (PARALLEL) - CENTRE LEG**


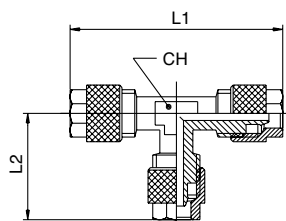
Codice Code	Tubo Tube	A	B	L1	L2	CH1	CH2	Conf. Pack.
012150001	6/4	1/8	6	41.2	22	8	13	25
012150002	6/4	1/4	8	41.2	26	8	16	25
012150003	8/6	1/8	6	43.2	24	9	13	25
012150004	8/6	1/4	8	43.2	27.5	9	16	25
012150006	10/8	1/8	6	48	22.5	11	13	25
012150005	10/8	1/4	8	48	27.5	11	16	25

# 1220

**RACCORDO A T MASCHIO LATERALE CONICO - TEE MALE ADAPTOR (TAPER) - OFF SET LEG**


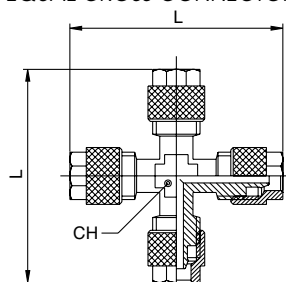
Codice Code	Tubo Tube	A	B	L1	L2	CH	Conf. Pack.
012200001	5/3	1/8	7.5	36.7	20.6	8	50
012200002	6/4	1/8	7.5	36.7	20.6	8	25
012200003	6/4	1/4	11	40.2	20.6	8	25
012200004	8/6	1/8	7.5	38	21.9	9	25
012200005	8/6	1/4	11	41.5	21.9	9	25
012200006	10/8	1/8	7.5	40	25.5	11	25
012200007	10/8	1/4	11	43	25.5	11	25
012200008	10/8	3/8	11.5	44	25.5	11	25
012200009	12/10	3/8	11.5	48.5	28	13	25
012200010	15/12.5	1/2	14	57.5	32.5	16	25

# 1230

**RACCORDO A T INTERMEDIO - TEE CONNECTOR**


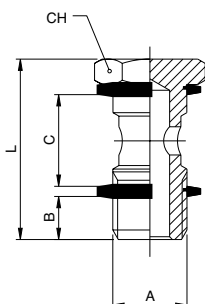
Codice Code	Tubo Tube	L1	L2	CH	Conf. Pack.	
012300001	4/2.7	40	20.5	8	50	
012300002	5/3	41.2	20.6	8	50	
012300003	6/4	41.2	20.6	8	25	
012300004	8/6	6/4	43.8	20.6	9	25
012300005	8/6	43.8	21.9	9	25	
012300006	10/8	6/4	51	20.6	11	25
012300007	10/8	8/6	51	21.9	11	25
012300008	10/8	51	25.5	11	25	
012300009	12/10	54	28	13	25	
012300010	15/12.5	63	32.5	16	25	

# 1300

**RACCORDO A CROCE INTERMEDIO - EQUAL CROSS CONNECTOR**


Codice Code	Tubo Tube	L	CH	Conf. Pack.
013000001	5/3	41.6	8	50
013000002	6/4	41.6	8	25
013000003	8/6	44.4	9	25
013000004	10/8	49	11	25
013000005	12/10	58	13	25
013000006	15/12.5	64	17	25

# 51410

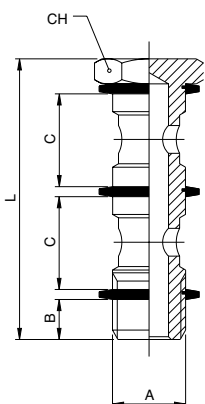
**VITE CAVA SINGOLA - BANJO STEM SINGLE**


Codice Code	A	B	C	L	CH	Conf. Pack.
514100011	M5	4	12.5	22	8	25
514100012	M6	5	12.5	23	8	25
514100013	1/8	6	15	28	14	25
514100014	1/4	8	17	32	17	25
514100015	3/8	9	20	36	19	25
514100016	1/2	10	24	42	24	25
514100017	*M12x1.5	8	17	32	17	25

QUESTO ARTICOLO VIENE FORNITO COMPLETO DI RONDELLE IN PA66 ART. 1610.  
THIS ITEM WILL BE SUPPLIED WITH THE PA66 WASHERS ART. 1610.

\*CON QUESTA VITE UTILIZZARE GLI ANELLI ORIENTABILI DA 1/4.  
\*WITH THIS BANJO STEM USING 1/4 ORIENTING BANJO BODY.

# 51420

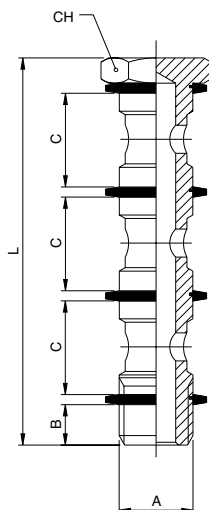
**VITE CAVA DOPPIA - BANJO STEM DOUBLE**


Codice Code	A	B	C	L	CH	Conf. Pack.
514200011	1/8	6	15	44.5	14	25
514200012	1/4	8	17	50.5	17	25
514200013	3/8	9	20	58	19	25
514200014	1/2	10	24	68	24	25
514200015	*M12x1.5	8	17	50.5	17	25

QUESTO ARTICOLO VIENE FORNITO COMPLETO DI RONDELLE IN PA66 ART. 1610.  
THIS ITEM WILL BE SUPPLIED WITH THE PA66 WASHERS ART. 1610.

\*CON QUESTA VITE UTILIZZARE GLI ANELLI ORIENTABILI DA 1/4.  
\*WITH THIS BANJO STEM USING 1/4 ORIENTING BANJO BODY.

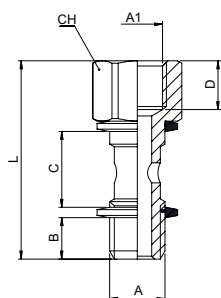
# 51430

**VITE CAVA TRIPLA - BANJO STEM TRIPLE**


Codice Code	A	B	C	L	CH	Conf. Pack.
514300011	1/8	6	15	61	14	25
514300012	1/4	8	17	69	17	25
514300013	3/8	9	20	80	19	25
514300014	1/2	10	24	94	24	10

QUESTO ARTICOLO VIENE FORNITO COMPLETO DI RONDELLE IN PA66 ART. 1610.  
THIS ITEM WILL BE SUPPLIED WITH THE PA66 WASHERS ART. 1610.

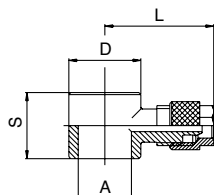
# 51440

**VITE CAVA SINGOLA MASCHIO - FEMMINA - MALE - FEMALE BANJO STEM SINGLE**


Codice Code	A	A1	B	C	D	L	CH	Conf. Pack.
514400001	1/8	1/8	6	15	8.5	34.5	14	25
514400002	1/4	1/4	8	17	11	40.5	17	25
514400003	3/8	3/8	9	20	12	45.5	19	25

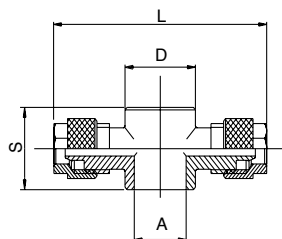
QUESTO ARTICOLO VIENE FORNITO COMPLETO DI RONDELLE IN PA66 (ART. 1610).  
THIS ITEM WILL BE SUPPLIED WITH THE PA66 WASHERS (ART. 1610).

# 1500

**ANELLO ORIENTABILE A L - SINGLE BANJO BODY**


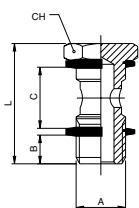
Codice Code	Tubo Tube	A	D	S	L	Conf. Pack.
015000001	4/2.7	M5	9	12.5	21.5	50
015000002	4/2.7	M6	9	12.5	21.5	10
015000003	4/2.7	1/8	14	15	22.5	50
015000004	5/3	M5	9	12.5	22	50
015000005	5/3	1/8	14	15	22.5	50
015000006	6/4	M5	9	12.5	22	50
015000007	6/4	M6	9	12.5	22	10
015000008	6/4	1/8	14	15	23	50
015000009	6/4	1/4	18	17	25	50
015000010	6/4	3/8	21	20	27	25
015000011	8/6	1/8	14	15	24.5	50
015000012	8/6	1/4	18	17	26	25
015000013	8/6	3/8	21	20	27	25
015000014	8/6	1/2	26	24	31	25
015000015	10/8	1/8	14	15	27.5	25
015000016	10/8	1/4	18	17	27.5	25
015000017	10/8	3/8	21	20	30.5	25
015000018	10/8	1/2	26	24	34	25
015000019	12/10	3/8	21	20	31.5	25
015000020	12/10	1/2	26	24	35	25
015000021	15/12.5	1/2	26	24	36.5	25

# 1510

**ANELLO ORIENTABILE A T - DOUBLE BANJO BODY**


Codice Code	Tubo Tube	A	D	S	L	Conf. Pack.
015100001	4/2.7	M5	9	12.5	43	50
015100002	4/2.7	1/8	14	15	43	50
015100003	5/3	M5	9	12.5	43	50
015100004	5/3	1/8	14	15	46.6	50
015100005	6/4	M5	9	12.5	43	50
015100006	6/4	1/8	14	15	46.6	50
015100007	6/4	1/4	18	17	50.6	25
015100008	6/4	3/8	21	20	53.6	25
015100009	8/6	1/8	14	15	49.4	25
015100010	8/6	1/4	18	17	55.2	25
015100011	8/6	3/8	21	20	55	25
015100012	8/6	1/2	26	24	61	25
015100013	10/8	1/8	14	15	53	25
015100014	10/8	1/4	18	17	59	25
015100015	10/8	3/8	21	20	61	25
015100016	10/8	1/2	26	24	66	25
015100017	12/10	3/8	21	20	63	25
015100018	12/10	1/2	26	24	70	25
015100019	15/12.5	1/2	26	24	73	25

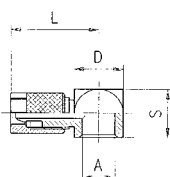
# LG 410

**VITE CAVA SINGOLA SERIE LEGGERA - BANJO STEM SINGLE LIGHT**


Codice Code	A	B	C	L	CH	Conf. Pack.
<b>LG41000002</b>	<b>M5</b>	3.5	9	18	8	25
<b>LG41000003</b>	<b>M6</b>	4	9	19	8	25

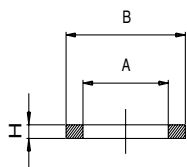
 QUESTO ARTICOLO VIENE FORNITO COMPLETO DI RONDELLE IN PA66 ART. 1610.  
 THIS ITEM WILL BE SUPPLIED WITH THE PA66 WASHERS ART. 1610.

# LG 500

**ANELLO ORIENTABILE SERIE LEGGERA - SINGLE BANJO BODY LIGHT**


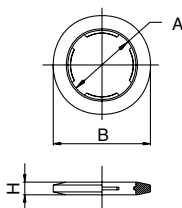
Codice Code	Tubo Tube	A	D	S	L	Conf. Pack.
<b>LG50000003</b>	<b>4/2.7</b>	<b>M5</b>	9	9	17	50
<b>LG50000005</b>	<b>4/2.7</b>	<b>M6</b>	9	9	17	50
<b>LG50000004</b>	<b>5/3</b>	<b>M5</b>	9	9	17	50
<b>LG50000002</b>	<b>6/4</b>	<b>M5</b>	9	9	16.5	50
<b>LG50000006</b>	<b>6/4</b>	<b>M6</b>	9	9	16.5	50

# 1600

**RONDELLA IN ALLUMINIO - ALUMINIUM WASHER**


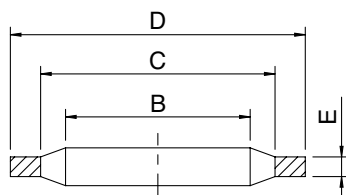
Codice Code	Misura Size	A	B	H	Conf. Pack.
<b>016000011B500</b>	<b>M5</b>	5.2	8	1	25
<b>0160000110200</b>	<b>1/8</b>	10	14	1.5	25
<b>0160000110300</b>	<b>1/4</b>	13.5	18	1.5	25
<b>0160000110400</b>	<b>3/8</b>	16.8	21	1.5	25
<b>0160000110500</b>	<b>1/2</b>	21.1	26	1.5	25
<b>016000011D700</b>	<b>M12</b>	12.5	18	1.5	25

# 1610

**RONDELLA DENTELLATA IN PA66 - PA66 NOTCHED-WASHER**


Codice Code	Misura Size	A	B	H	Conf. Pack.
<b>016100025A700</b>	<b>M3</b>	2.5	5.5	0.5	25
<b>016100025B500</b>	<b>M5</b>	5.2	8	1	25
<b>016100025B800</b>	<b>M6</b>	6.1	9	1.3	25
<b>0161000250200</b>	<b>1/8</b>	10	14	1.5	25
<b>0161000250300</b>	<b>1/4</b>	13.5	18	1.5	25
<b>0161000250400</b>	<b>3/8</b>	16.8	21	1.5	25
<b>0161000250500</b>	<b>1/2</b>	21.1	26	2	25
<b>0161000250700</b>	<b>3/4</b>	27	32	2.5	25
<b>0161000250900</b>	<b>1"</b>	34	41	2.5	25

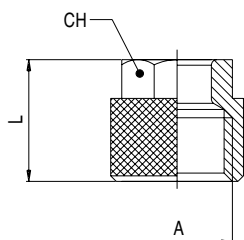
# 1612

**RONDELLA BIMATERIALE IN ACCIAIO E NBR - STEEL AND NBR BIMATERIAL WASHER**

**CARATTERISTICHE TECNICHE / TECHNICAL CHARACTERISTICS**

 Temperatura minima / minimum temperature: **-30°C**  
 Temperatura massima / maximum temperature: **+100°C**

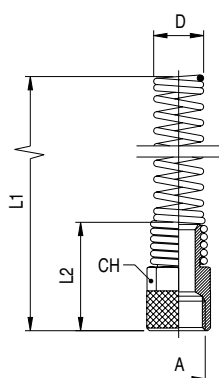
Codice Code	A	B	C	D	E	Conf. Pack.
<b>0161200001</b>	<b>1/8</b>	10.4	12	14.7	1.25	25
<b>0161200002</b>	<b>1/4</b>	13.85	15.75	18.7	1.25	25
<b>0161200003</b>	<b>3/8</b>	17.35	19.25	22.7	1.25	25
<b>0161200004</b>	<b>1/2</b>	21.65	23.55	26.7	1.25	25
<b>0161200005</b>	<b>3/4</b>	27.3	29.2	32.5	1.25	25
<b>0161200006</b>	<b>1"</b>	34.2	36.1	39.5	2	25

# 1700

**DADO DI BLOCCAGGIO - LOCKING NUT**


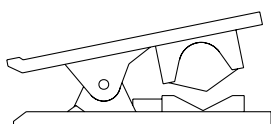
Codice Code	Codice Code	A	L	CH	Conf. Pack.
0170000013ZNB	4/2.7	M6x0.5	9	7	50
0170000016ZNB	5/3	M7x0.75	11	8	50
0170000019ZNB	6/4	M8x0.75	11	8	50
0170000010XNB	6/4	M10x1	11	10	50
0170000014XNB	8/6	M12x1	11.5	12	50
0170000015XNB	10/8	M14x1	13.5	14	50
0170000016XNB	12/10	M16x1	15	15	50
0170000017XNB	15/12.5	M20x1	16	19	50

# 1710

**DADO DI BLOCCAGGIO CON MOLLA - LOCKING NUT WITH SPRING**


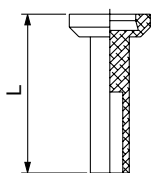
Codice Code	Tubo Tube	A	D	L1	L2	CH	Conf. Pack.
0171000001	6/4	M10x1	9.4	93	20	11	25
0171000002	8/6	M12x1	11.4	98.5	21	13	25
0171000003	10/8	M14x1	13.4	107	24	14	25
0171000004	12/10	M16x1	16	116.5	27.5	17	25

# 1750

**TAGLIATUBO IN PLASTICA - PLASTIC PIPE CUTTER**


Codice Code	Conf. Pack.
0175000001	10

# 8610

**TAPPO IN POLIAMIDE - POLYAMIDE PLUG**


Codice Code	Tubo Tube	L	Conf. Pack.
086100031X1RO	4	23.5	25
086100031X3RO	5	24.5	25
086100031X4RO	6	24.5	25
086100031X7RO	8	26	25
086100031X9RO	10	28.5	25
086100031Y1RO	12	28.5	25